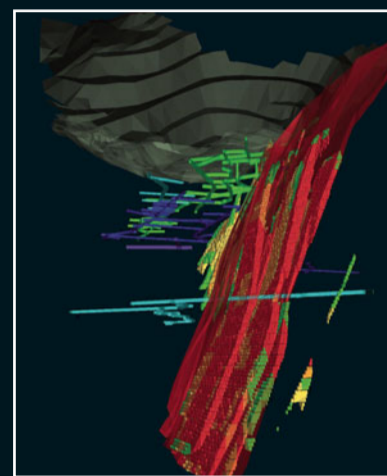
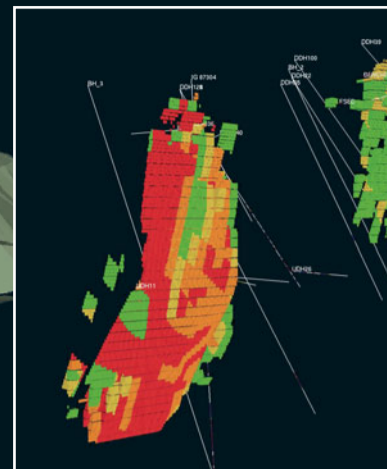
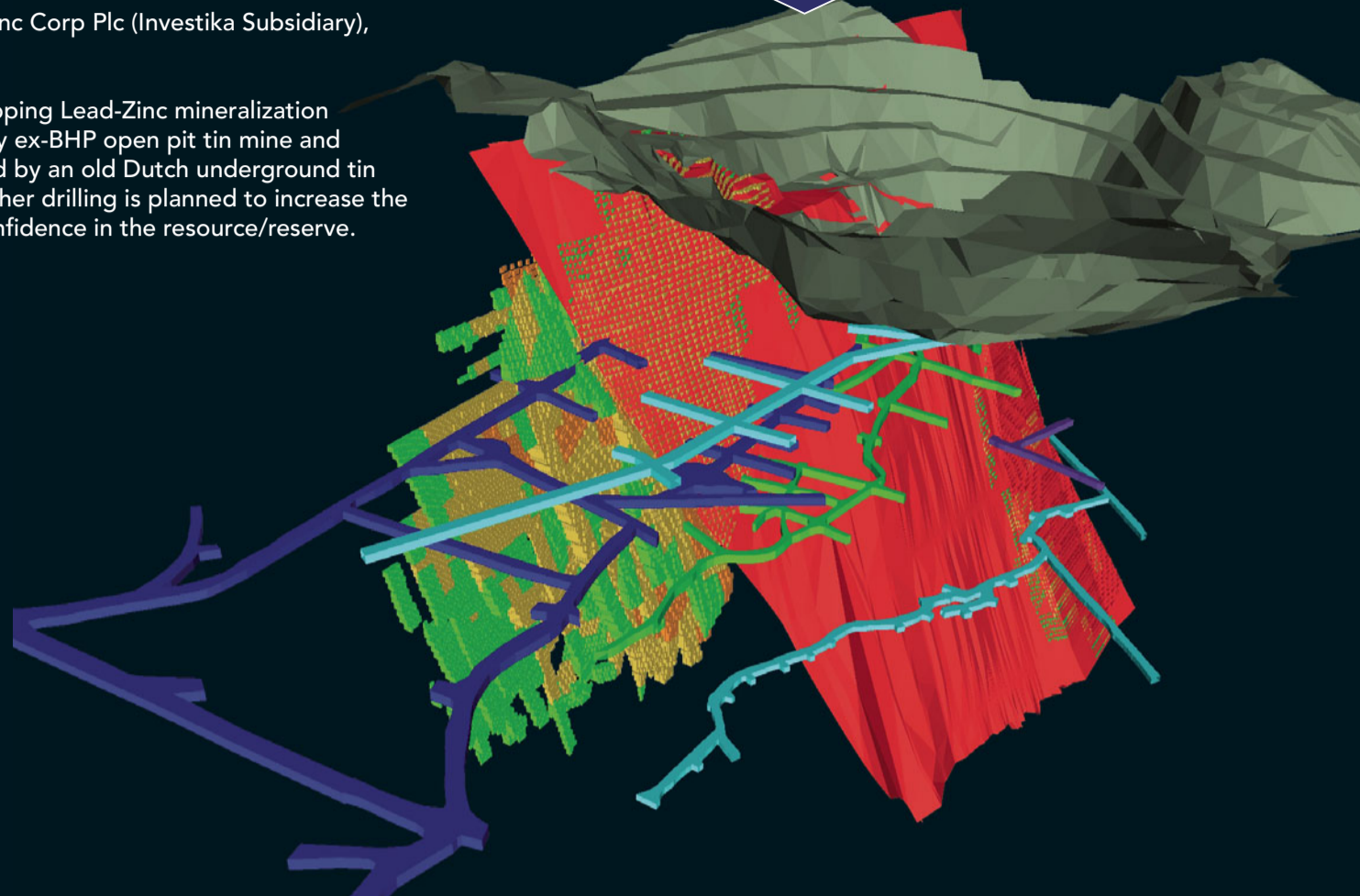


# DATAMINE

Veri Yadi Lutis, Mining Engineer

Belitung Zinc Corp Plc (Investika Subsidiary),  
Indonesia

Steeply dipping Lead-Zinc mineralization  
exposed by ex-BHP open pit tin mine and  
intercepted by an old Dutch underground tin  
mine. Further drilling is planned to increase the  
level of confidence in the resource/reserve.



## January 2008

MONDAY		7	14	21	28
TUESDAY	1	8	15	22	29
WEDNESDAY	2	9	16	23	30
THURSDAY	3	10	17	24	31
FRIDAY	4	11	18	25	
SATURDAY	5	12	19	26	
SUNDAY	6	13	20	27	

**AUSTRALIA**  
61 8 9479 1771

**BRAZIL**  
55 31 3264 9377

**CANADA**  
1 705 688 0101

**CHILE**  
56 2 334 5952

**CHINA**  
86 10 8868 4729

**INDIA**  
91 11 694 8393

**INDONESIA**  
62 21 7883 4767

**IRAN**  
98 21 831 3093

**KAZAKHSTAHN**  
7 3332 498 806

**MEXICO**  
52 871 731 0786

**PERU**  
51 1 222 6000

**POLAND**  
48 71 34 37987

**SOUTH AFRICA**  
27 11 803 6608

**SPAIN**  
34 626 732 522

**RUSSIA**  
7 812 525 4459

**UK**  
44 1749 670 097

**USA**  
1 303 985 7713

**CEMENT &  
INDUSTRIAL MINERALS**  
44 1749 670 097

## February 2008

MONDAY		4	11	18	25
TUESDAY		5	12	19	26
WEDNESDAY		6	13	20	27
THURSDAY		7	14	21	28
FRIDAY	1	8	15	22	29
SATURDAY	2	9	16	23	
SUNDAY	3	10	17	24	



RM Scheduler has been specially designed to optimize the extraction of industrial mineral deposits such as limestone, gypsum, talc, aggregates and clay. You can choose to maximize your raw material resources available for blended products, or, choose to maximize the profit from mining those materials. RM Scheduler not only tells you the optimal limits of the quarry but will also tell you the optimal sequence by which the quarry should be mined to either deliver a consistently blended product or to deliver the highest net present value on your investment. An optional stockpile management system is also available to optimize the re-handling of off-spec materials and minimize the use of expensive imports or additives. If you need to improve quality and cost control, and extend the life of your quarry, then RM Scheduler has the answer.

# DATAMINE

Craig Reardon, Senior Mine Surveyor  
(main Rosebery decline wireframes)

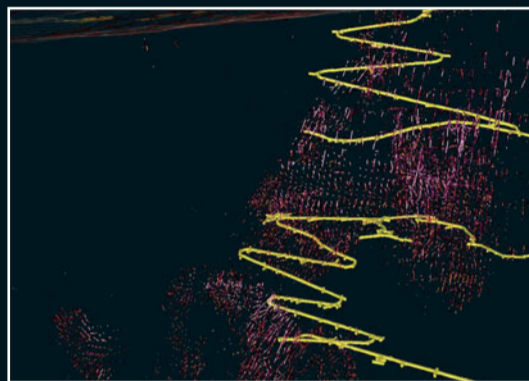
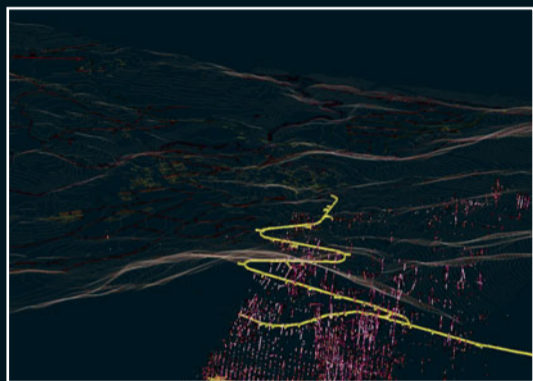
All geologists past and present  
(drillhole database)

Julie Schumacher, ex AMC drafts person  
(Rosebery topography strings)

Stuart Dawes, Mine Geologist  
(data compilation)

Zinifex Rosebery Mine, Australia

The Rosebery volcanic hosted massive sulphide deposit is a polymetallic lead, zinc, copper, silver and gold deposit with a current strike length of ~3.5kms and down dip extent of ~2400m. The deposit has been progressively mined for over 100 years.



## March 2008

MONDAY	31	3	10	17	24
TUESDAY		4	11	18	25
WEDNESDAY		5	12	19	26
THURSDAY		6	13	20	27
FRIDAY		7	14	21	28
SATURDAY	1	8	15	22	29
SUNDAY	2	9	16	23	30

**AUSTRALIA**  
61 8 9479 1771

**BRAZIL**  
55 31 3264 9377

**CANADA**  
1 705 688 0101

**CHILE**  
56 2 334 5952

**CHINA**  
86 10 8868 4729

**INDIA**  
91 11 694 8393

**INDONESIA**  
62 21 7883 4767

**IRAN**  
98 21 831 3093

**KAZAKHSTAHN**  
7 3332 498 806

**MEXICO**  
52 871 731 0786

**PERU**  
51 1 222 6000

**POLAND**  
48 71 34 37987

**SOUTH AFRICA**  
27 11 803 6608

**SPAIN**  
34 626 732 522

**RUSSIA**  
7 812 525 4459

**UK**  
44 1749 670 097

**USA**  
1 303 985 7713

**CEMENT & INDUSTRIAL MINERALS**  
44 1749 670 097

## April 2008

MONDAY		7	14	21	28
TUESDAY	1	8	15	22	29
WEDNESDAY	2	9	16	23	30
THURSDAY	3	10	17	24	
FRIDAY	4	11	18	25	
SATURDAY	5	12	19	26	
SUNDAY	6	13	20	27	



Mine2-4D is a Mine Planning and Scheduling System that delivers cost and performance improvements through efficient Data and Change Management. It provides a fully integrated system for engineers to manage the complexity of data from geological, survey, and mine design layout by producing complete and detailed mine plans and schedules. In addition, it has the ability to quickly assess the financial implications of variations in a mine plan.

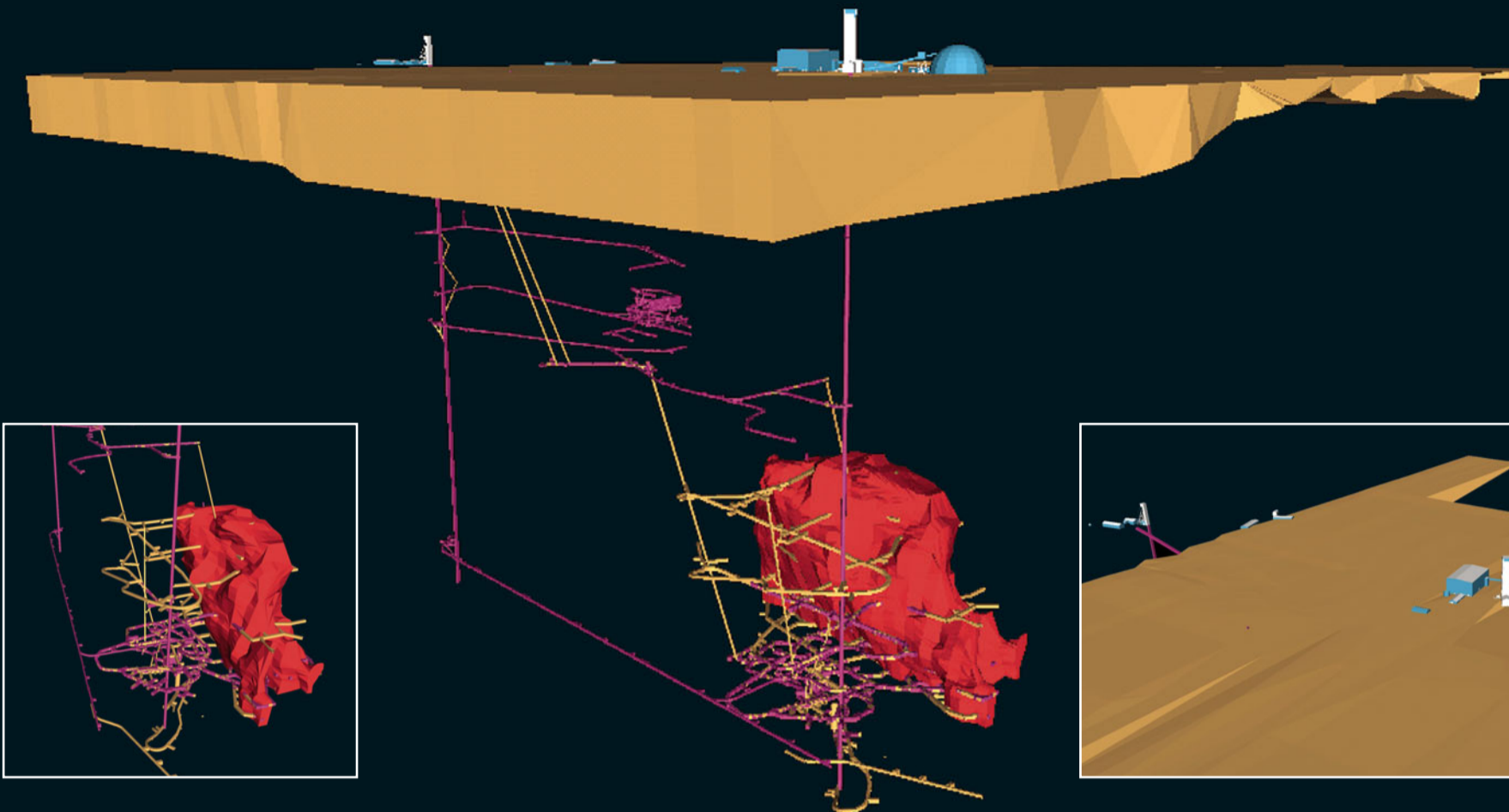
DATAMINE

Department

Names

Company

Title



## May 2008

MONDAY		5	12	19	26
TUESDAY		6	13	20	27
WEDNESDAY		7	14	21	28
THURSDAY	1	8	15	22	29
FRIDAY	2	9	16	23	30
SATURDAY	3	10	17	24	31
SUNDAY	4	11	18	25	

**AUSTRALIA**  
61 8 9479 1771

**BRAZIL**  
55 31 3264 9377

**CANADA**  
1 705 688 0101

**CHILE**  
56 2 334 5952

**CHINA**  
86 10 8868 4729

**INDIA**  
91 11 694 8393

**INDONESIA**  
62 21 7883 4767

**IRAN**  
98 21 831 3093

**KAZAKHSTAHN**  
7 3332 498 806

**MEXICO**  
52 871 731 0786

**PERU**  
51 1 222 6000

**POLAND**  
48 71 34 37987

**SOUTH AFRICA**  
27 11 803 6608

**SPAIN**  
34 626 732 522

**RUSSIA**  
7 812 525 4459

**UK**  
44 1749 670 097

**USA**  
1 303 985 7713

**CEMENT & INDUSTRIAL MINERALS**  
44 1749 670 097

## June 2008

MONDAY	30	2	9	16	23
TUESDAY		3	10	17	24
WEDNESDAY		4	11	18	25
THURSDAY		5	12	19	26
FRIDAY		6	13	20	27
SATURDAY		7	14	21	28
SUNDAY	1	8	15	22	29



Studio 3 is the latest version of the industry-standard mining software from Datamine, building on its existing reputation of delivering highly configurable and powerful solutions for orebody modeling and mine planning. Whether in consultancy, exploration, resource development, planning or production, Studio is the standard used by mining professionals in every corner of the world.

# DATAMINE'S Solution Footprint



## Geological Data Management System (GDMS)

A geological data management system that synchronises between head office and remote sites - automatically, every day - to deliver quality controlled drilling results to the corporate office. Features include 3D face mapping, integrated sampling, laboratory data management and much more.

**Products:** DH Logger, MineMapper 3D, Fusion Database



## Resource / Reserve Management Solution (RRMS)

A Geological and Mine Planning solution that has led the industry for 25 years in multi-parametric orebody modelling down to sub-cell level.

**Products:** Studio 3, InTouch Virtual Reality



## Mine Strategy / Optimisation

Strategic mine planning for open pit that targets maximum NPV with a pit design and mining schedule that are practical and workable. Underground stope locators that find the mineable ore and build the optimal mining envelopes for stoping.

**Products:** NPV Scheduler, Stope Optimiser, MultiMine Scheduler



## Mine Design and Scheduling

Detailed mine design that is integrated with the scheduling, production and reconciliation tools to create the heart of day-to-day production control in mining departments.

**Products:** Mine 2-4D, Extractive Production Scheduler



## Mine Production

Drill and blast, ore control and short term scheduling that takes the mine planning department out into the pit.

**Products:** Ore Controller / Enterprise, Ring & Blast Design, Material Blending

YOUR INTEGRATED SOLUTION - FROM BUSH TO BANK

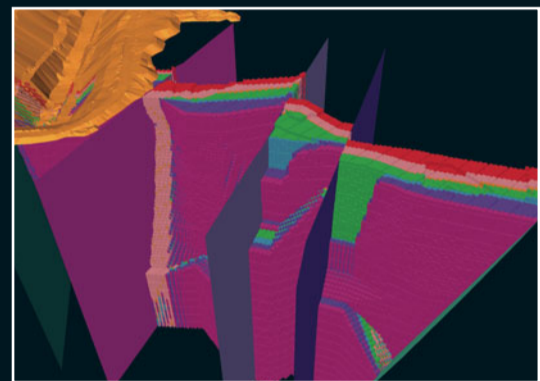
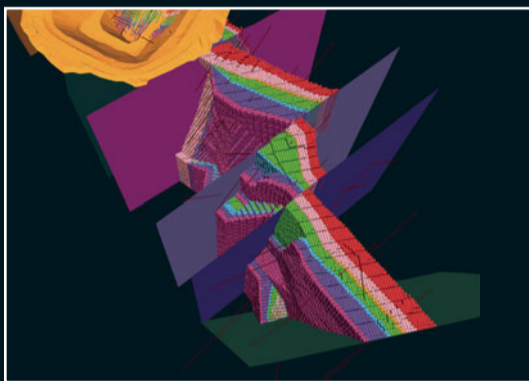
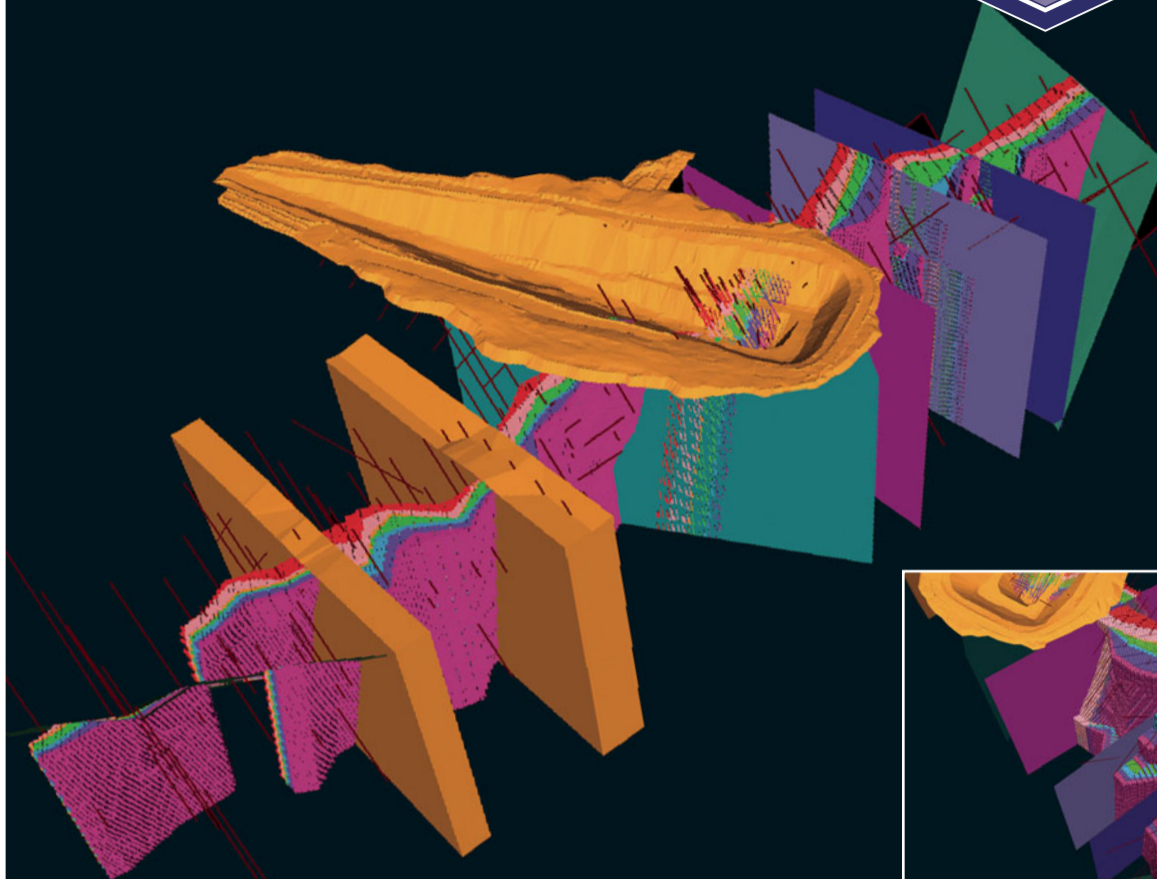
DATAMINE

Richard Sulway, Senior Consultant

Snowden Mining Industry Consultants on behalf of Platinum Australia Ltd

The Crater platinum group metals (PGM) deposit is located in the western limb of the Kraaipan greenstone belt, approximately 350 km west of Johannesburg in South Africa. The PGM mineralization is hosted by a sub-vertical layered intrusion (Stella Layered Intrusion) which is composed of magnetite-rich gabbros and subordinate magnetitites. At Crater, seven distinct mineralized layers have been identified.

The Crater deposit is one of seven PGM deposits known as the Kalplats project with a combined strike length of about seven km. These deposits represent dismembered units of a once continuous reef zone. The Kalplats project is being developed by Platinum Australia Limited in a joint venture with African Rainbow Minerals Platinum (Proprietary) Limited.



## July 2008

MONDAY		7	14	21	28
TUESDAY	1	8	15	22	29
WEDNESDAY	2	9	16	23	30
THURSDAY	3	10	17	24	31
FRIDAY	4	11	18	25	
SATURDAY	5	12	19	26	
SUNDAY	6	13	20	27	

AUSTRALIA  
61 8 9479 1771

BRAZIL  
55 11 3846 4501

CANADA  
1 705 688 0101

CHILE  
56 2 334 5952

CHINA  
86 10 8868 4729

INDIA  
91 11 2694 8393

INDONESIA  
62 21 7883 4767

IRAN  
98 21 831 3093

KAZAKHSTAHN  
7 3332 498 806

MEXICO  
52 871 731 0786

PERU  
51 1 222 6000

POLAND  
48 71 34 37987

SOUTH AFRICA  
27 11 803 6608

SPAIN  
34 626 732 522

RUSSIA  
7 812 525 4459

UK  
44 1749 670 097

USA  
1 800 499 7877

CEMENT & INDUSTRIAL MINERALS  
44 1749 670 097

## August 2008

MONDAY		4	11	18	25
TUESDAY		5	12	19	26
WEDNESDAY		6	13	20	27
THURSDAY		7	14	21	28
FRIDAY	1	8	15	22	29
SATURDAY	2	9	16	23	30
SUNDAY	3	10	17	24	31



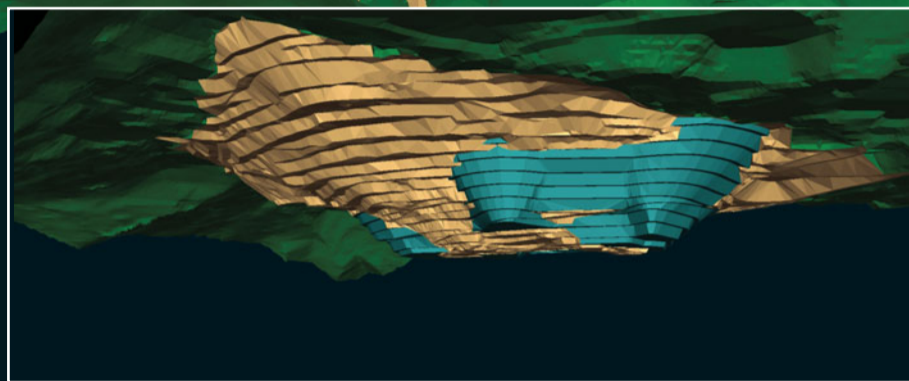
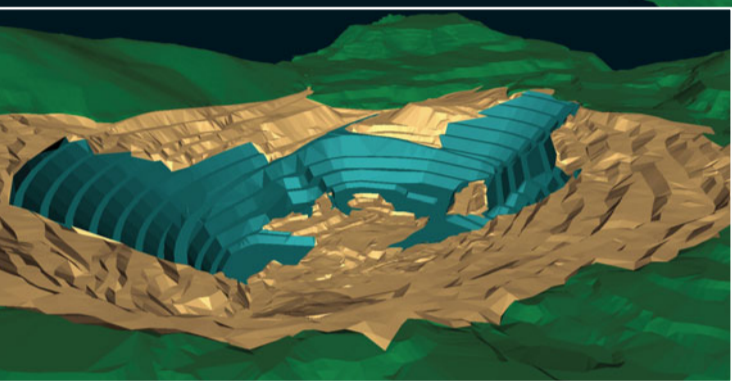
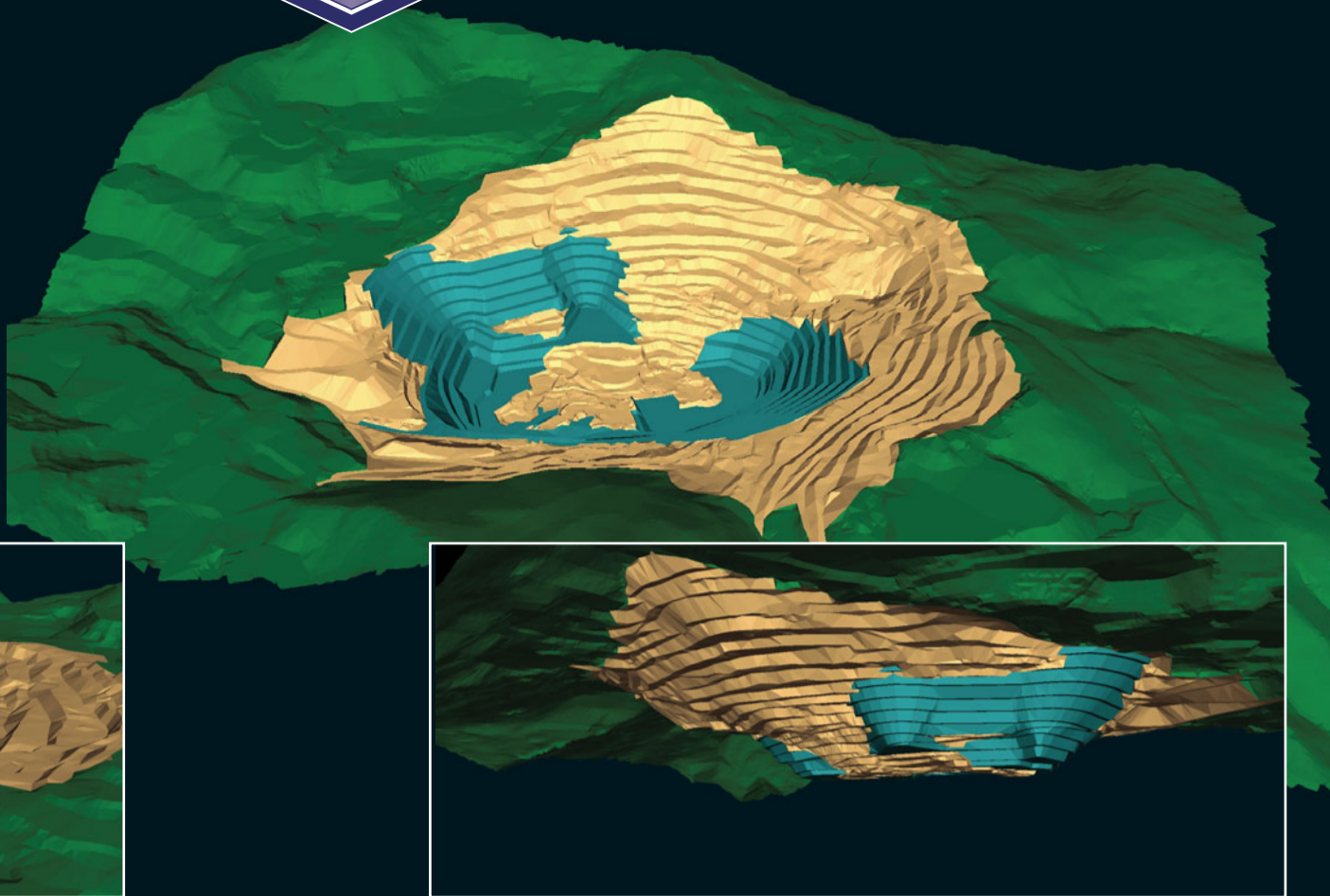
Enhanced Production Scheduler is a versatile, powerful, scheduling package designed specifically for the mining industry. The program encompasses the key activities associated with the scheduling and monitoring of critical resources.

Results can be processed and displayed as Gantt charts or in association with histograms and tables for Crosstab reporting.

Sergio Cusiani, Senior Mining Planning and Design Engineer

JSC Madneuli, Georgia

JSC Madneuli is currently involved in ore, copper and gold mining and smelting. The image depicts a helicopter view of one of the satellite pits, showing surface topography and drillhole intersections.



## September 2008

MONDAY	1	8	15	22	29
TUESDAY	2	9	16	23	30
WEDNESDAY	3	10	17	24	
THURSDAY	4	11	18	25	
FRIDAY	5	12	19	26	
SATURDAY	6	13	20	27	
SUNDAY	7	14	21	28	

- AUSTRALIA**  
61 8 9479 1771
- BRAZIL**  
55 31 3264 9377
- CANADA**  
1 705 688 0101
- CHILE**  
56 2 334 5952
- CHINA**  
86 10 8868 4729
- INDIA**  
91 11 694 8393
- INDONESIA**  
62 21 7883 4767
- IRAN**  
98 21 831 3093
- KAZAKHSTAHN**  
7 3332 498 806
- MEXICO**  
52 871 731 0786
- PERU**  
51 1 222 6000
- POLAND**  
48 71 34 37987
- SOUTH AFRICA**  
27 11 803 6608
- SPAIN**  
34 626 732 522
- RUSSIA**  
7 812 525 4459
- UK**  
44 1749 670 097
- USA**  
1 303 985 7713
- CEMENT & INDUSTRIAL MINERALS**  
44 1749 670 097

## October 2008

MONDAY		6	13	20	27
TUESDAY		7	14	21	28
WEDNESDAY	1	8	15	22	29
THURSDAY	2	9	16	23	30
FRIDAY	3	10	17	24	31
SATURDAY	4	11	18	25	
SUNDAY	5	12	19	26	

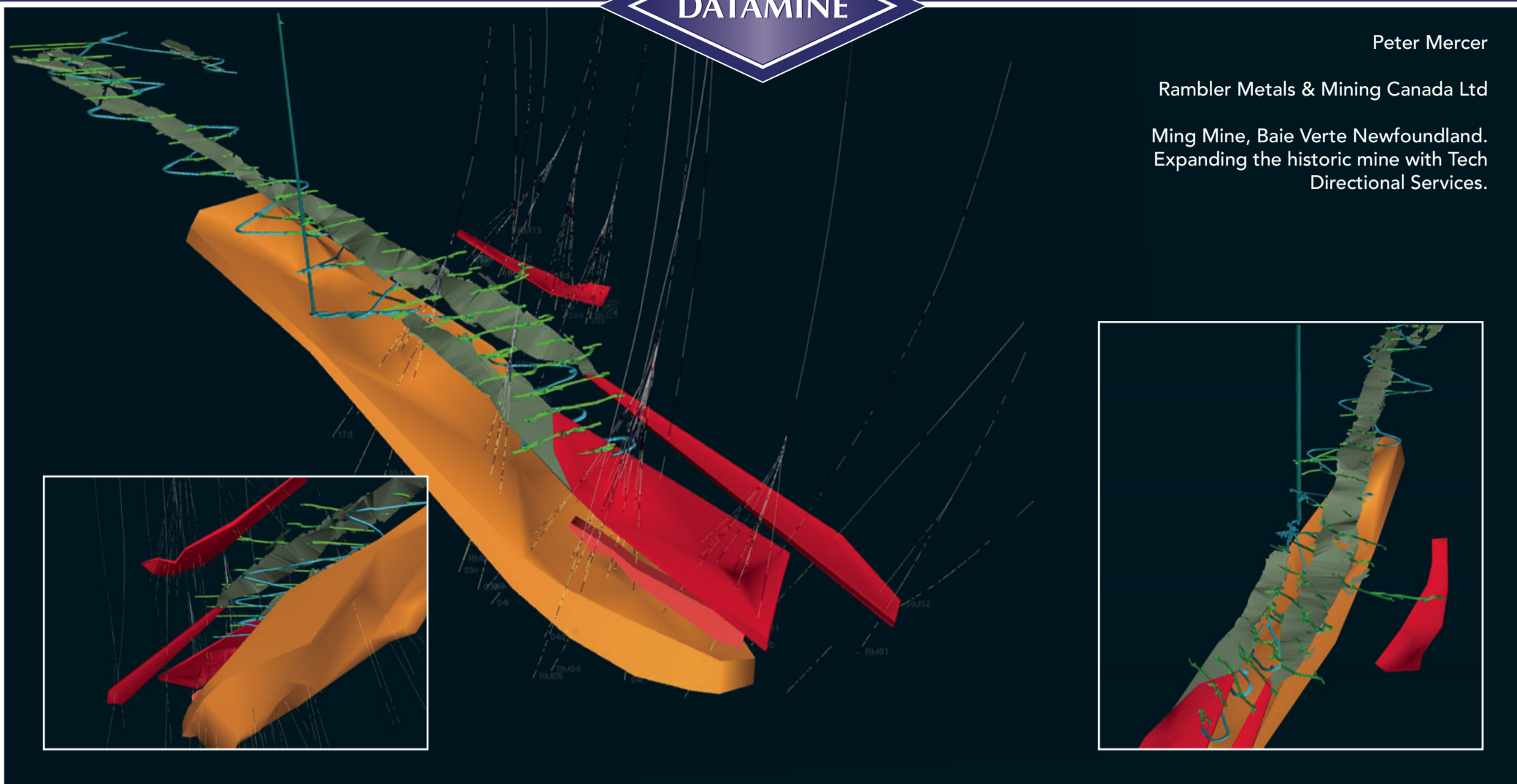


NPV Scheduler comprises three main modules: the ultimate pit shell optimizer, the pushback generator, the optimizing scheduler and with NPV Scheduler+, stockpiling and haulage optimization are also included. NPV Scheduler+MFO combines cut-off grade optimization seamlessly within the same framework. You are guided through the operation of each module with a flow sheet style menu which gives a clear indication of the processing path and the options available at each step. These options include 2D and 3D charting, contouring and visualization tools allowing you to quickly validate and present the results of an optimization.

Peter Mercer

Rambler Metals & Mining Canada Ltd

Ming Mine, Baie Verte Newfoundland.  
Expanding the historic mine with Tech  
Directional Services.



## November 2008

MONDAY		3	10	17	24
TUESDAY		4	11	18	25
WEDNESDAY		5	12	19	26
THURSDAY		6	13	20	27
FRIDAY		7	14	21	28
SATURDAY	1	8	15	22	29
SUNDAY	2	9	16	23	30

**AUSTRALIA**  
61 8 9479 1771

**BRAZIL**  
55 31 3264 9377

**CANADA**  
1 705 688 0101

**CHILE**  
56 2 334 5952

**CHINA**  
86 10 8868 4729

**INDIA**  
91 11 694 8393

**INDONESIA**  
62 21 7883 4767

**IRAN**  
98 21 831 3093

**KAZAKHSTAHN**  
7 3332 498 806

**MEXICO**  
52 871 731 0786

**PERU**  
51 1 222 6000

**POLAND**  
48 71 34 37987

**SOUTH AFRICA**  
27 11 803 6608

**SPAIN**  
34 626 732 522

**RUSSIA**  
7 812 525 4459

**UK**  
44 1749 670 097

**USA**  
1 303 985 7713

**CEMENT &  
INDUSTRIAL MINERALS**  
44 1749 670 097

## December 2008

MONDAY	1	8	15	22	29
TUESDAY	2	9	16	23	30
WEDNESDAY	3	10	17	24	31
THURSDAY	4	11	18	25	
FRIDAY	5	12	19	26	
SATURDAY	6	13	20	27	
SUNDAY	7	14	21	28	



Multimine Scheduler allows you to coordinate production of two or more mines, where each mine is described by its own geological model. The optimization method is the same as used by NPV Scheduler but, unlike NPV Scheduler, Multimine Scheduler can handle multiple block models and multiple pushback sequences. Schedules can be generated to account for any number of practical constraints (examples include maintaining ore output and strip ratios at prescribed levels, blending, controlling ore contamination) while obtaining a realistic NPV estimate. You are also able to generate schedules incorporating haulage analysis. This enables you to maintain constant truck fleet sizes and plan for fleet changes.

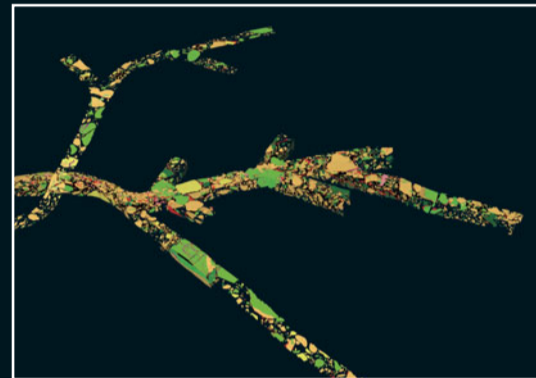
The Geology Department

FNX Mining Co. Inc., McCreedy West Mine.

Located 34km northwest of Sudbury in Canada, the image shows the development and ore deposits at the McCreedy West Mine. Contact Ni-Cu deposits along the base of the Sudbury Igneous Complex are shown in red. PM Footwall Deposit is in light red. The PM deposit is a Sudbury Breccia hosted Cu-PGE vein system.



Inset: PM Deposit geological mapping pressed to development break. Sulphide veins and clasts within the Sudbury breccia matrix are shown.



# January 2009

MONDAY		5	12	19	26
TUESDAY		6	13	20	27
WEDNESDAY		7	14	21	28
THURSDAY	1	8	15	22	29
FRIDAY	2	9	16	23	30
SATURDAY	3	10	17	24	31
SUNDAY	4	11	18	25	

- AUSTRALIA**  
61 8 9479 1771
- BRAZIL**  
55 31 3264 9377
- CANADA**  
1 705 688 0101
- CHILE**  
56 2 334 5952
- CHINA**  
86 10 8868 4729
- INDIA**  
91 11 694 8393
- INDONESIA**  
62 21 7883 4767
- IRAN**  
98 21 831 3093
- KAZAKHSTAHN**  
7 3332 498 806
- MEXICO**  
52 871 731 0786
- PERU**  
51 1 222 6000
- POLAND**  
48 71 34 37987
- SOUTH AFRICA**  
27 11 803 6608
- SPAIN**  
34 626 732 522
- RUSSIA**  
7 812 525 4459
- UK**  
44 1749 670 097
- USA**  
1 303 985 7713
- CEMENT & INDUSTRIAL MINERALS**  
44 1749 670 097

# February 2009

MONDAY		2	9	16	23
TUESDAY		3	10	17	24
WEDNESDAY		4	11	18	25
THURSDAY		5	12	19	26
FRIDAY		6	13	20	27
SATURDAY		7	14	21	28
SUNDAY	1	8	15	22	29



Mineable Reserves Optimizer is the complete solution for optimizing mineable reserves for both open cut and underground applications, based on the Floating Stope™ technique developed by Datamine. MRO can best be described as a 3D block compositor which analyses the distribution of grade in a block model and builds optimal envelopes of mineable reserves based on user supplied criteria.